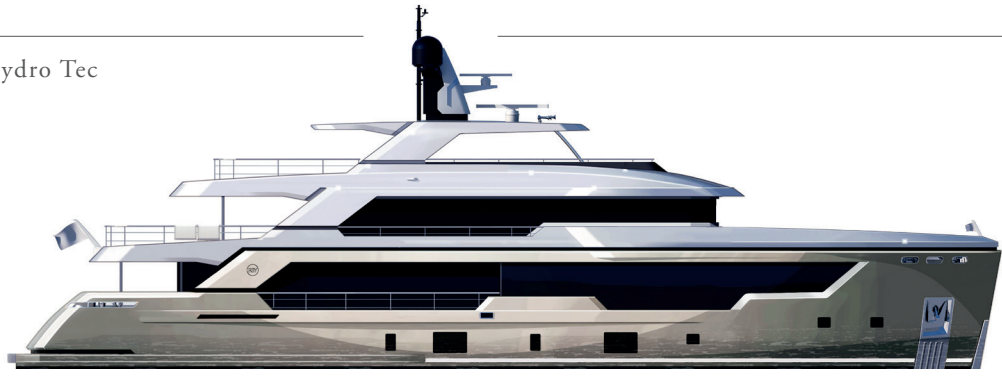
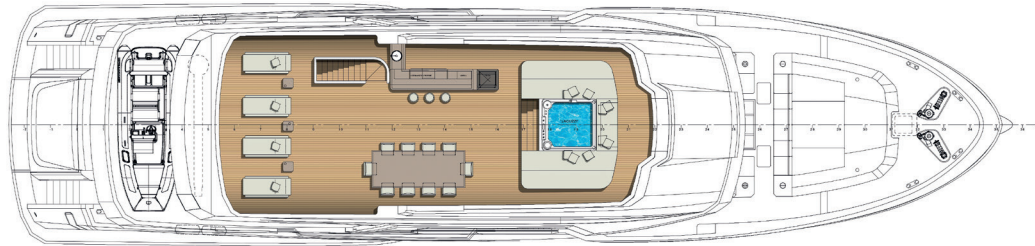


38m Explorer - design Hydro Tec
 Technical Data

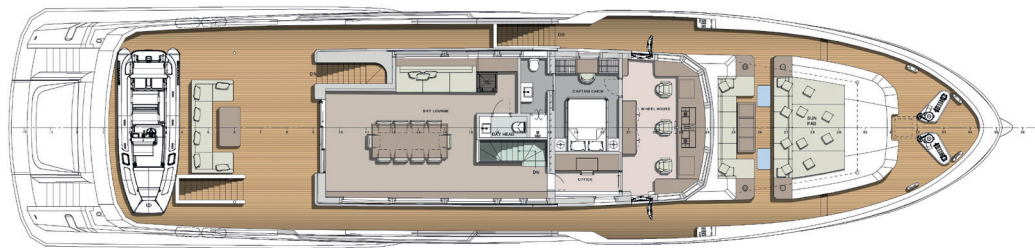
Profile



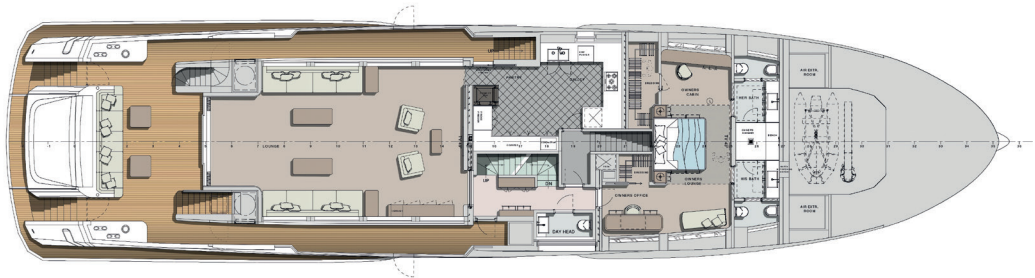
Sun Deck



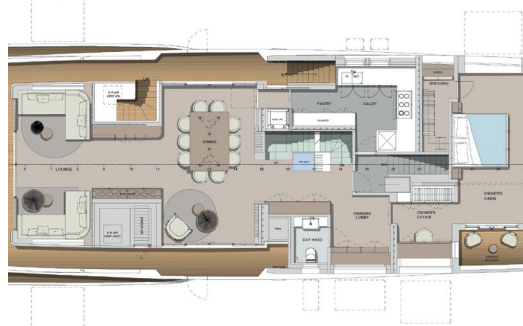
Upper Deck



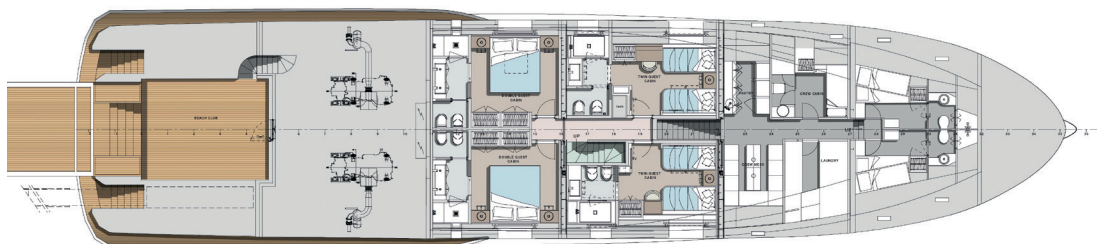
Main Deck



Main Deck version B



Lower Deck



| | | | | | | |
|--------------------|----------------------------|------------|------------|--|---------|-------------|
| ENGINES | 2 x MAN D2868 LE425/588 kW | 1470 HP | MAIN SIZES | LoA: Length overall | 37,83 m | 124 ft 1 in |
| | | | | Lwl: Waterline Length | 36,73 m | 120 ft 6 in |
| SPEED | Maximum speed | 13 knots | | Maximum Beam | 8,85 m | 29 ft 0 in |
| | Cruising speed | 11 knots | | Depth | 4,30 m | 14 ft 1 in |
| RANGE | Autonomy at 10 knots | 5.000 n.m. | | Moulded draft | 2,37 m | 7 ft 9 in |
| (Nautical Miles) | | | | Gross tonnage | 395 | GRT |
| GUESTS 12 - CREW 7 | | | | CERTIFICATION RINA C, ❖ HULL, •MACH, Y, Short Range, LY4 compliant | | |

The Technical data, performances, designs and graphic reproductions are purely indicative, are not contractual, shall not constitute in any circumstances whatsoever any contractual offer by the shipyard and refer to European standard models of motor yachts built by the shipyard. The only valid technical reference or description is the specific parameters of each motor yacht cited only on purchase of the same. Therefore the only indications binding on the seller are contained solely in the Contract and in the relevant Technical Specification.